



FOOD FOREST

DESIGN

ILLUSTRATION



Eetbaar landschap

Contents

Welcome!

And great that you are interested in food forests!

This document provides you with a clear overview of what a food forest design process entails.

Step by step I will take you through the design process and explain what each phase yields.

The illustrations in this brochure are based on the design of a 3-hectare private domain, including an intensive food forest zone. In addition to private owners, I also support agricultural companies and community projects in shaping edible landscapes.

The design is created through interaction: between your vision, the uniqueness of the country and my expertise as a designer.

You will be intensively involved from the start, so that the end result is not only well thought out, but also supported. Together we will build a future-proof design — ready to be planted.

The different steps in the design process are:

- Preliminary investigation
- Basic plan
- Site-analyse
- Klantinterview
- Zoning plan
- Planting plan canopy layer
- Planting plan shrub layer
- Plant list
- Advice on construction and phasing

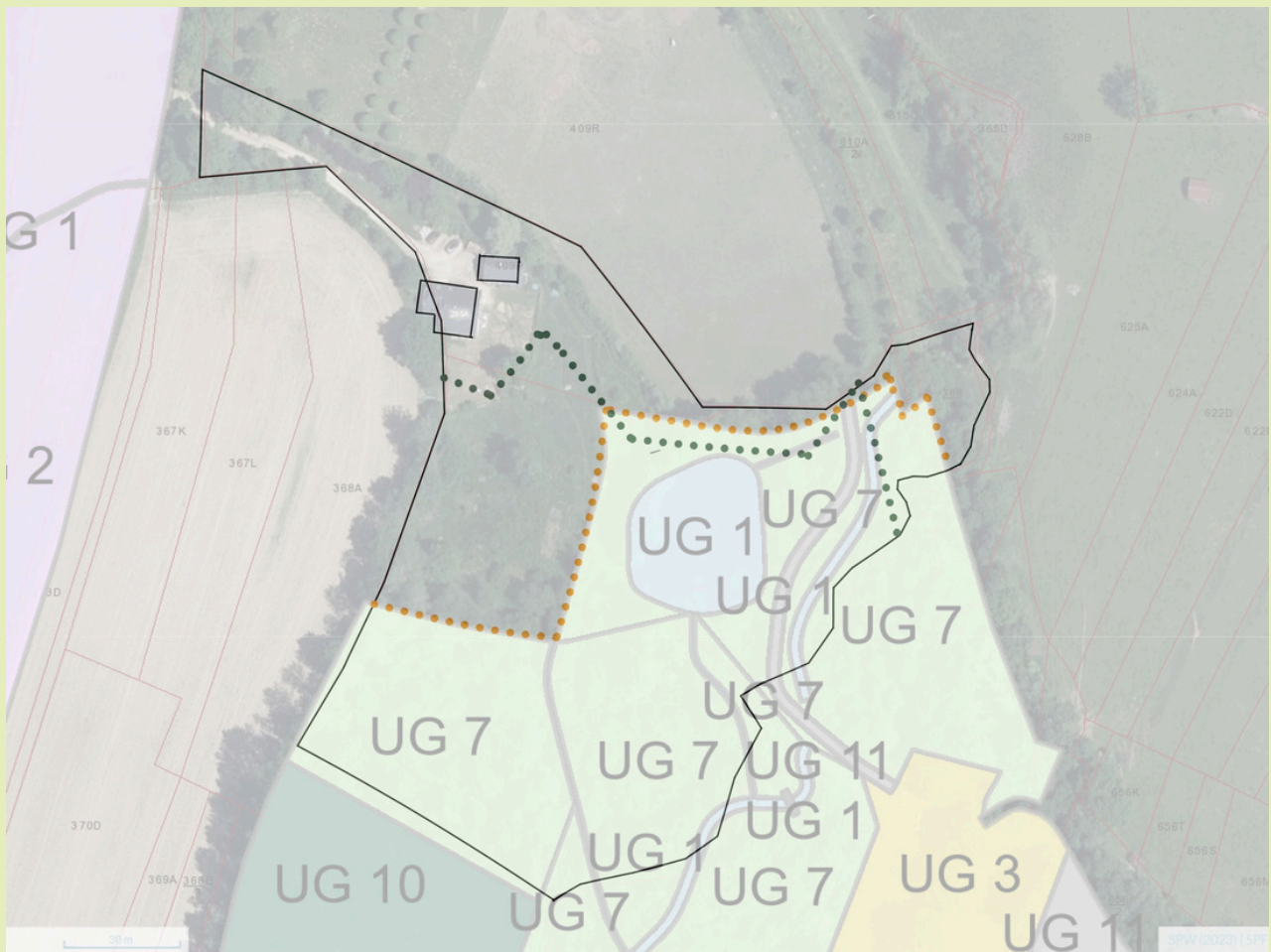




2 years young food forest in Vremde. Design: Edible Landscape

THE PRELIMINARY INVESTIGATION

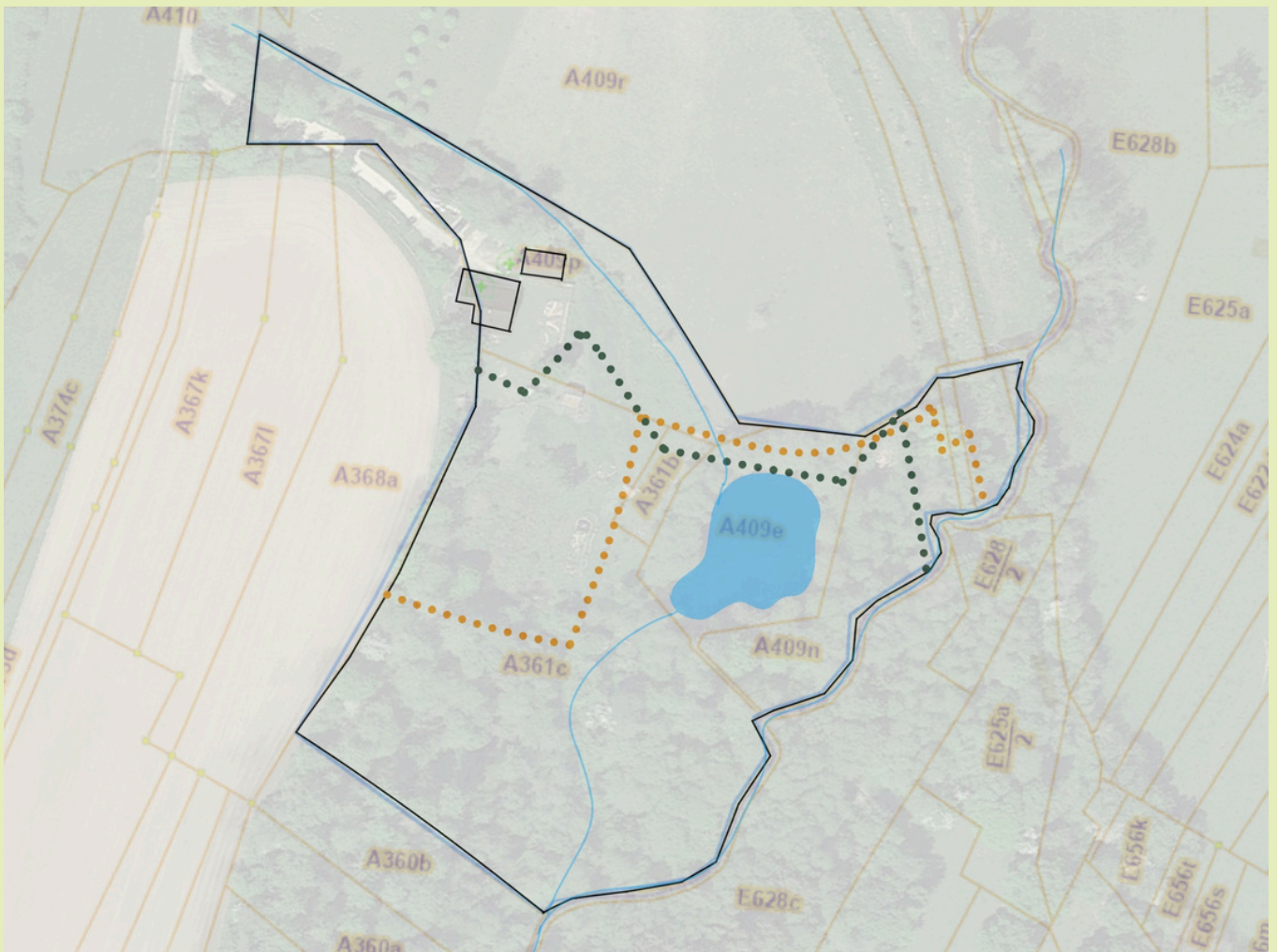
In the online preliminary research we map out the context of your project. We look for legal possibilities and possible restrictions. Looking at the broader context (residential areas, comparable projects, ...) and also at the soil and water management of your specific plot.



Hybrid map to scale showing plot boundaries and the different Natura 2000 zones that influence what can be planted on the project.

THE BASIC PLAN

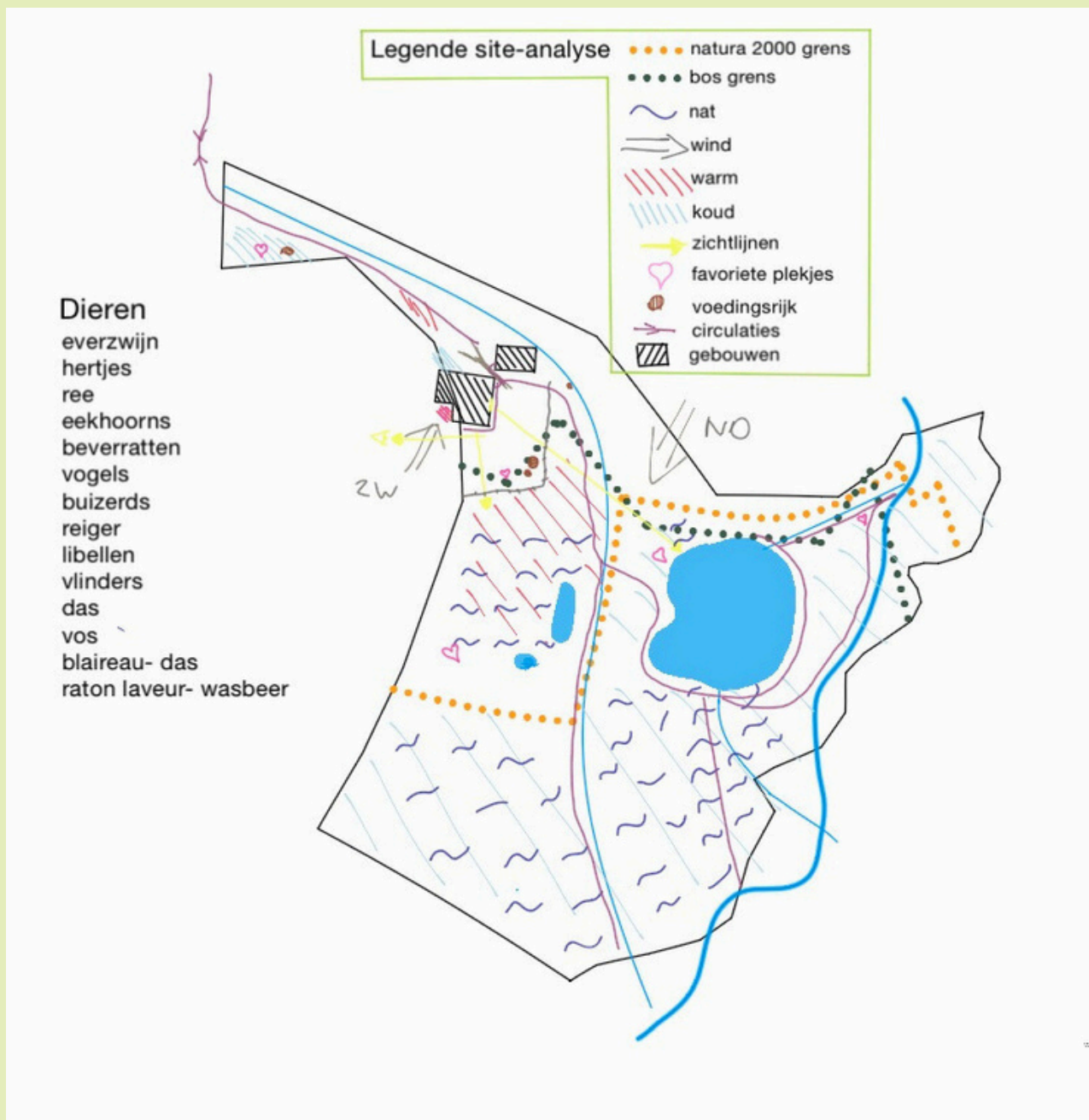
The basic plan is a working plan to scale - indicating the plot boundaries, waterways and infrastructure - on which we base all subsequent design steps.



Basic plan to scale incl. fixed structures and waterways

SITE ANALYSIS

The site analysis maps out the biotic and abiotic factors by means of the 4 elements: water, fire, earth and wind. This is the layer in which we together deeply explore the uniqueness of your terrain.



Site analysis with accompanying legend

THE CUSTOMER INTERVIEW

During the customer interview I listen carefully to your wishes and ideas.

We map out what your dreams are and what functions you have in mind.

We use targeted questions to delve into your vision and use of the land.

This is how we collect the building blocks for a design that really suits you.



ZONING PLAN

The zoning plan provides a clear overview of the functions, elements and circulation flows on the site.

Zones are classified based on, among other things, intensity of use, water management, soil, etc.

We facilitate logical placement, efficient movement and synergy between the components.

This plan provides the basis from which we zoom in on the planting plan.



Zoning plan to scale

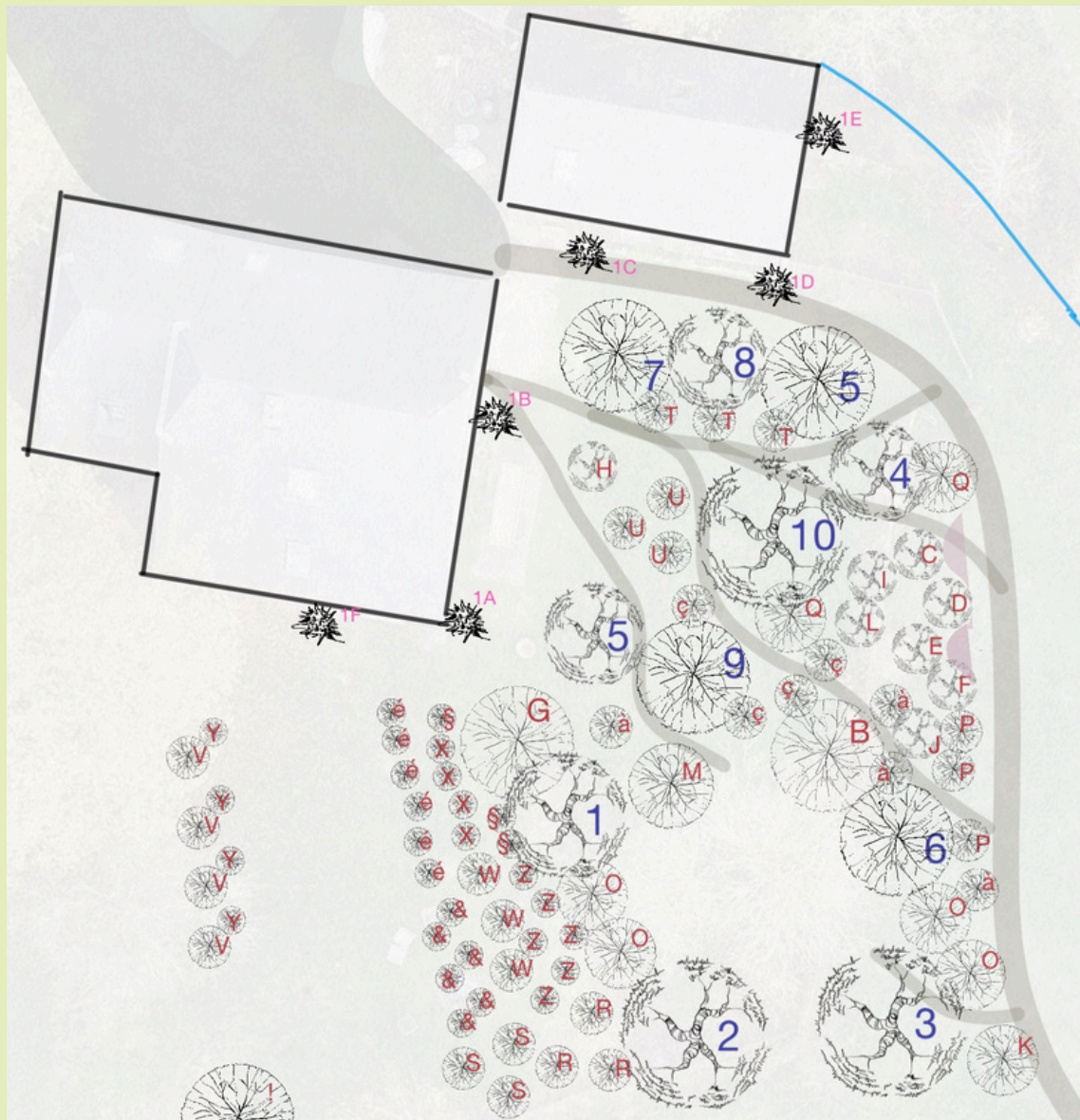
PLANTING PLAN

The planting plan translates the design vision into a concrete implementation with choice of species and planting locations.

Soil type, sunlight, water management and ecological coherence are taken into account.

The selected species fulfil multiple functions, such as food production, shade, wind break and biodiversity.

This creates a resilient system in which plants support each other and strengthen the ecosystem.



enlarged image of the planting plan of the canopy and shrub layer of the final food forest zone.

PLANT LIST

The plant list provides an overview of all selected species within the design.

For each species, characteristics such as botanical name, cultivar, size, flowering and harvest period are mentioned.

The list is a practical tool for planting, management and monitoring.

Together with the planting plan, it is the reference for a targeted and efficient implementation of the design. The planting plan consists of several layers:

- Crown layer
- Shrub layer
- Accumulation trees
- Advice towards Kruidlaag
- Climbers
- Hedges and hedges

and usually includes an estimate of the expected investment for completeness. This way you know where you stand.

Legende	Botanische naam	Spreeknaam	Cultivar	HOS/HAS/LS/STRI kruinbreedte	Aantal	grootte/ blote wortel	Bloeitijd	oogsttijd	Leverancier	boompaal?
1	Mispelus germanica	Mispel	kurpfalz	HOS	5	1 Pot 5L	mei/juni	november	zoete wei	ja, uit het bos gehaald
2	Cydonia oblonga	Kweeper	Vranja	HOS	6	1 Pot 5L	mei	november	zoete wei	ja, uit het bos gehaald
3	Prunus cecifera	kerspruim	zoete wei	HOS	6	1 Pot 5L	maart	juli	zoete wei	ja, uit het bos gehaald
4	Prunus institia	mirabel	vlaamse mirabel	HOS	4	1 Pot 5L	april	aug	zoete wei	ja, uit het bos gehaald
5	Cornus kousa	Chinese kornoefje	milky way	STRK	4	2 pot 2L	juni	sept	zoete wei	
6	Cornus mas	gele kornoefje	Pioneer	Strk	5	1 Pot 2L	februari -ma	aug	zoete wei	
7	Cornus mas	gele kornoefje	paczoski	Strk	5	1 pot 5L	februari -ma	aug-okt	Zoete wei	
8		Peerlijsterbes	Shipova	HOS	4	1 Pot 2L	lente	aug	Zoete wei	
9	Sorbarionia	Sorbarionia	Likornaya	Strk	4	1 Pot 5L	lente	aug	Zoete wei	
10	Pyrus pirifolia	nashi peer	Shinko	has	6	1 pot 2L	april	oktober	Zoete wei	
11	Ficus carica	Vijg	Blanche d'argenteuille	Strk	5	1 pot 2L		sept-nov	Zoete wei	
12	SALIX BABYLONICA	kruilwilg	toruosa	STRK	10	1 Struik-co			van pelt	
13	THUJA PLICATA	westerse levensboom	martin		10	1 100-125			van pelt	
14	SALIX SEP.	treurwilg	chrysocoma		15	1 hoogstam 8-10			van pelt	
15	crataegus schanderiana	vruchtmeidoorn		STRK	6	1 pot 2L	mei	half september	zoete wei	
16	crataegus tanacetifolia	vruchtmeidoorn		STRK	10	1 pot 2L	mei	oktober	zoete wei	
17	juglans regia	walnoot	buccaneer	HOS	20	1		oktober	nationale boomgaardstic	ja, uit het bos gehaald
18	juglans regia	walnoot	broadview	HOS	15	1		oktober	nationale boomgaardstic	ja, uit het bos gehaald

Example of a canopy layer plant list

ADVICE ON CONSTRUCTION AND PHASING

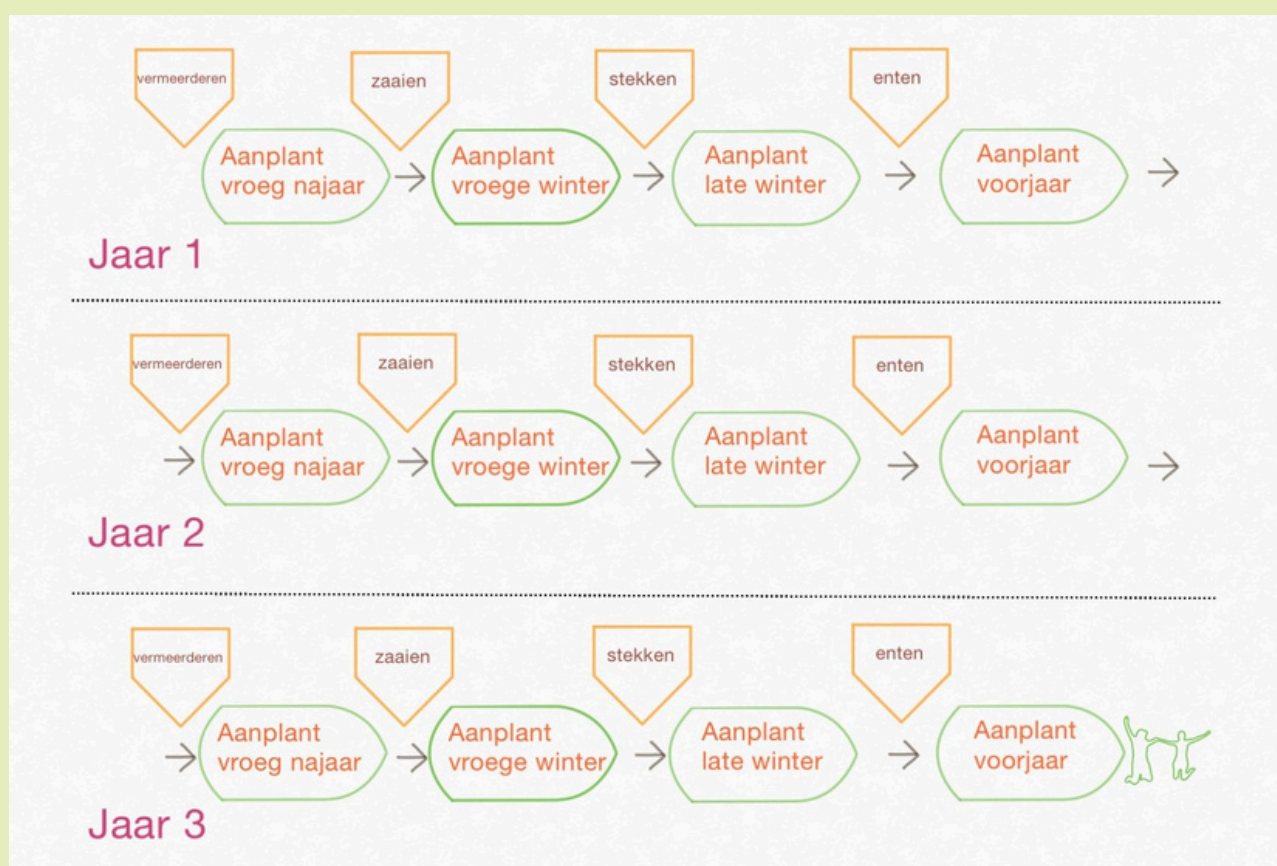
The food forest will be constructed in phases over several years, with attention paid to soil preparation, planting times and available plant material.

Each year, planting times are carefully chosen: from early autumn to spring, depending on the layer and type of plants.

At the same time, the focus is on propagation, sowing, cuttings and grafting, so that the system develops step by step and your self-sufficiency increases.

This advice is interwoven in the collaboration and enables a feasible phased implementation.

You know how to make the design take root over the years on your site



CURIOUS TO KNOW MORE?



Eetbaar landschap

A food forest arises from a dream that wants to take root, from a desire to work together with the power of the land. In every step of the process, care, attention and co-creation are central - tailored to your place, your rhythm, your vision - supported by my years of knowledge and experience.

We listen to the squirming in the soil, follow the flow through all the design steps and ultimately plant trees and plates that will last for generations.

In this process I invite you to listen, observe and allow what wants to arise.

Together we build a landscape that nourishes, restores and reconnects.

Do you feel the call to get started?

Please feel free to contact us —

I'd be happy to walk with you for a while.

Call or write me for an
introductory meeting:
welkom@eetbaarlandschap.be
or +32499247690

